



THORNHILL
GALLERIES

FINE FIREPLACES & ACCESSORIES

WELLINGTON CRESCENT, NEW MALDEN, GREATER LONDON, KT3 3NE, UK
T: +44 (0) 208 949 4757 | WWW.THORNHILLGALLERIES.CO.UK

Interior Design Yearbook *professional edition*

2016



INTERIOR DESIGN YEARBOOK 2016



Edited by Jade Tilley

Foreword by Daniel Hopwood, President, BIID

...contributors



Jo Littlefair, Goddard Littlefair
Jo Littlefair is the ultimate specialist in interior design schemes and FF&E, both in the global hotel and spa markets and at the highest end of the residential market for private clients and developers. In 2015 Jo successfully launched her own furniture and accessories label, Jo Littlefair London.
www.goddardlittlefair.com



Fiona and Ian Livingston, Co-Founders, StudioFibre
Studiofibre is the dynamic architecture and design studio founded by Ian and Fiona Livingston in 2007, which is fast becoming known for creating inspirational spaces for 21st Century brand leaders including Net-A-Porter, Farfetch, NOTHS, The White Company and Agent Provocateur.
www.studiofibre.com



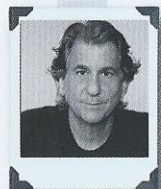
Natalia Miyar, Head of Design, Helen Green Design
Natalia Miyar has been practicing interior design and architecture for over fifteen years, establishing a reputation for creating elegant, luxurious interiors for private clients and prestigious developments. Natalia took the helm at Helen Green Design in 2011 and today oversees all aspects of the studio.
www.helengreendesign.com



Paul Nulty, Head of Practice, Paul Nulty Lighting Design
Paul established PNLD in 2011 to explore and push the boundaries in lighting design. He has worked on a variety of prestigious and award winning projects across many sectors and combines a creative edge with an eye for detail and an understanding of how lighting impacts atmosphere, mood and ultimately behaviour.
www.paulnulty.co.uk



Mila Podablonska, Founder, Absolute Interior Décor
Designer Mila Podablonska has built up an international interiors business that now comprises a clientele with an unwavering taste for elegance and an uncompromising demand for quality.
absoluteinteriordecor.com



David Rockwell, Founder and President, The Rockwell Group
With a theatre background, David is adept at bringing a sense of showmanship to his work. With architectural training at Syracuse University and further studies at the Architectural Association in London, these formative influences continue to have a strong impact on David and the work of Rockwell Group.
www.rockwellgroup.com

INTERIOR DESIGN YEARBOOK 2016 Contributors



Robert Angell, Founder, Robert Angell Design International
Robert has travelled the globe in search of great design, set up his own company and lecturers on the subject of design. Robert worked closely alongside David Collins for over 15 years as Creative Director of David Collins Studio before launching his own design studio in 2010.
robertangelldesigninternational.com



Marcus Barnett, Founder, Marcus Barnett
Marcus spent seven years with the army and was then appointed as Equerry to HRH the Duke of Kent KG before giving in to his deep-seated love of landscape and garden design. He won his first Gold medal at the RHS Chelsea Flower Show only a year after graduating from the Ingham School of Design in 2004.
www.marcusbarnett.com



Mark Bithrey, Design Director and Founder of B3 Designers
Mark Bithrey founded architectural interior design consultancy B3 Designers in 2002. B3 creates distinctive, fresh and contemporary designs for the hotels, bars, restaurants, retail and distinctive workspaces.
www.b3designers.co.uk



Tim Boyd, Co-Founder, Michaelis Boyd Associates
Co-founded by Alex Michaelis and Tim Boyd in 1995, Michaelis Boyd is a design-led architecture practice with a creative approach that has earned a reputation for simple, elegant architecture with an emphasis on sustainable, environmentally sound architectural solutions.
Michaelisboyd.com



Louise Bradley, Founder, Louise Bradley
Louise Bradley is regarded as a leading interior designer, internationally renowned for her contemporary styling, elegant lines and timeless appeal. Louise has a wealth of knowledge and informs her clients through her design studio and two showrooms on Walton Street and Kimbolton Court, London.
www.louisebradley.co.uk



Tiffany Duggan, Founder, Studio Duggan
Studio Duggan is a leading design studio creating distinctive and well considered interiors for high-end residential and boutique commercial projects. Founded by Tiffany Duggan in 2011, Tiffany's background in set design and interiors formed the perfect foundation from which to establish Studio Duggan.
www.studioduggan.com



FARMHOUSE COMFORT, HOTEL LUXURY

This was a project to fully renovate a relatively new farmhouse in Belgium, which was built in the 1970's in an area well known for fruit farming and horse riding. Mila's client is a successful young businessman and farmer who travels a great deal on business, spending much of his time in comfortable city hotels. The principle remit therefore was to deliver that hotel level of luxury in the farmhouse, but also making the property warm and comfortable, only using high-quality natural materials and incorporating real fireplaces for a homely feel for when he returns. The exterior improvements also needed to be sympathetic to the surrounding buildings, which in many cases were much older properties, with some dating from the 15th century.



Belgian Farmhouse, Borgloon, Belgium, was designed by Mila Podziablonska of Absolute Interior Décor and completed in December 2014. Photography by Richard Gooding.



Above: International influences are brought in through lighting and some material trends

- the one thing all my clients are looking for is a home with five-star style and services.

“Wherever my clients are in the world, they are knowledgeable about the kind of services and latest gadgets that are on the market and want them incorporated into the design.”

With every project, I start with some reconfiguration of their space, particularly the living

and dining areas. Take for example a 1970's farmhouse I recently completed in Belgium. The building itself is beautiful and structurally sound and certainly large enough for its owners, but the internal spaces were designed at a time that doesn't work for the way we live now.

Similarly, our bathing experiences and expectations have changed dramatically thanks to new technology and bathroom supplier designs. Where a bath was once enough, now a walk-in rain shower with hydro massage, a wall mounted waterproof TV, fibre-optic lighting for various mood settings, not to mention the self de-misting mirrors, seem to be the order of the day.

When it came to redesigning the space, I could see the living and dining areas could be made

so much more special. I created a raised living room that was flooded with natural light thanks to a wall of floor to ceiling glass windows that runs along the entire rear of the building, affording views over the clients' orchards and farmland. The raised section was already there, but was closed in with dark wooden walls, so I added a glass balustrade for modernity and to let the light flow through into the now spacious formal dining area.

As the property was originally a farmhouse, I wanted to introduce an element to suggest the authenticity of its origins, so I incorporated a panel of logs next to the central fireplace in the living room, and balanced this design detail with further sections of logs, this time with subtle down lighting, in the dining room. Authenticity in any



Trend: International Design

By Mila Podiablonska
Founder, Absolute Interior Décor

Designer Mila Podiablonska has built up an international interiors business that now comprises a clientele with an unwavering taste for elegance and an uncompromising demand for quality. Her primary objective is to create an environment that her clients will love. Her philosophy is, and has always been, to put them first. Mila believes that good design starts and ends by incorporating their needs to create a functional, comfortable environment and she encourages the clients' participation throughout the whole process. Here, Mila uses her international upbringing to discover more about the nuances of design across the globe.

I was born in Russia and raised in Kiev, Ukraine, where I started my interior design career. Quite soon I realised I wanted to expand my business internationally, as well as broaden my skills and experience, so I moved to London to study with the Kelly Hoppen Design company.

After that, my own company really took off. Thanks to the fact that I have lived and worked in different countries, I already have an international perspective on clients and designs. With a farmhouse completed in Belgium, four projects in Kiev and one in India, I have learnt quickly how design and the challenges it creates with tradesman and logistics differs from country to country. But there is one constant



Above: Useable, warm and inviting spaces are universally welcomed

Gallery

The gallery presents an exclusive collection of companies who create innovative concepts with professional designers in mind. From stunning lighting installations to sculptures and beautifully formed furniture, the gallery displays these designs in their best light, created to inform your design decisions over the next year.

MILA PODIABLONSKA

project is essential and reading the space and understanding its location, on a global scale, is really crucial to getting the best out of any project.

The rest of the property's scheme has layers of texture, from fabrics in smooth silk and soft velvet to furniture in warm wood and lighting in enticing crystals. All this is enveloped in a colour palette of gentle creams, muted taupes and earthy browns.

Working abroad for international clients is always more of a challenge than designing in the UK. My new projects in Kiev, which are in progress, require a lot more power, electrical, lighting and plumbing upgrades. Those basic utilities are still not up to par in Eastern Europe compared to Western Europe, and unless it is a new home or apartment building, they have to be either completely changed or upgraded. Projects take a little longer to deliver with a lot of red tape that a designer has to be able to cut through with diplomacy and tact. In this case, knowing the right people in the Kiev city hall is helping me immensely to keep my projects on time. In other countries, a designer from abroad will have to adjust to the local language, habits, culture and customs of the workmen on the project.

Wherever my clients are in the world, they are very knowledgeable about the kind of services and latest gadgets that are on the market and want them incorporated into the design. However different their tastes and needs may be, they all have something in common – the desire for a quality interior, a luxury finish, that blends their vision and expectations...and sometimes, even adds a few more.

absoluteinteriordesign.com



Above: Belgian Farmhouse project. The hallway to kitchen view