

The Best New Builds ❄ Extensions ❄ Conversions ❄ Home Improvements

SELF BUILD & DESIGN

www.selfbuildanddesign.com

January 2015 £4.25



Pretty in pink

A dramatic barn conversion

PLUS

**THE BEST
RANGE COOKERS**

Beginner's
guide to
glazing

IDEAS
MODERNIST
MASTERPIECE
OAK-FRAMED
EXTENSION
INTERIORS

**BUILDING A
HOLIDAY LET**

Inspiring case studies

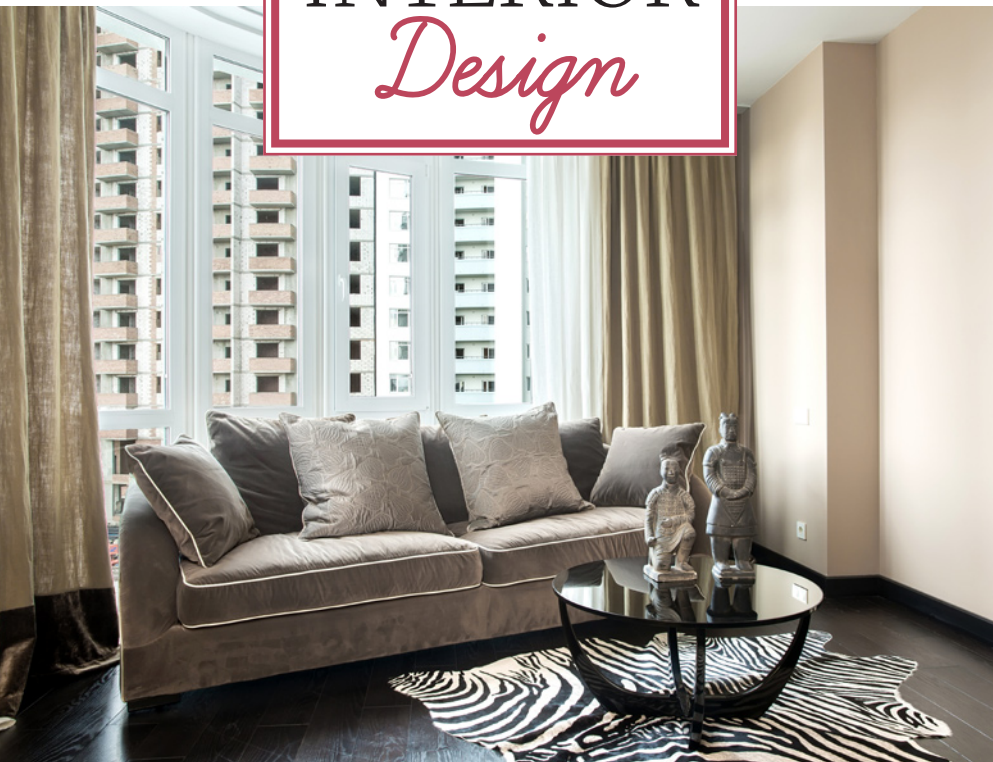
- ◆ Chapel conversion
- ◆ £120k seaside new build
- ◆ Adding a glazed extension
- ◆ Eco house that's a wildlife haven

ADVICE

Your legal rights
with faulty goods

PLUS GET FREE ACCESS TO OUR ONLINE PLOTS DATABASE

INTERIOR *Design*



Master *of illusion*

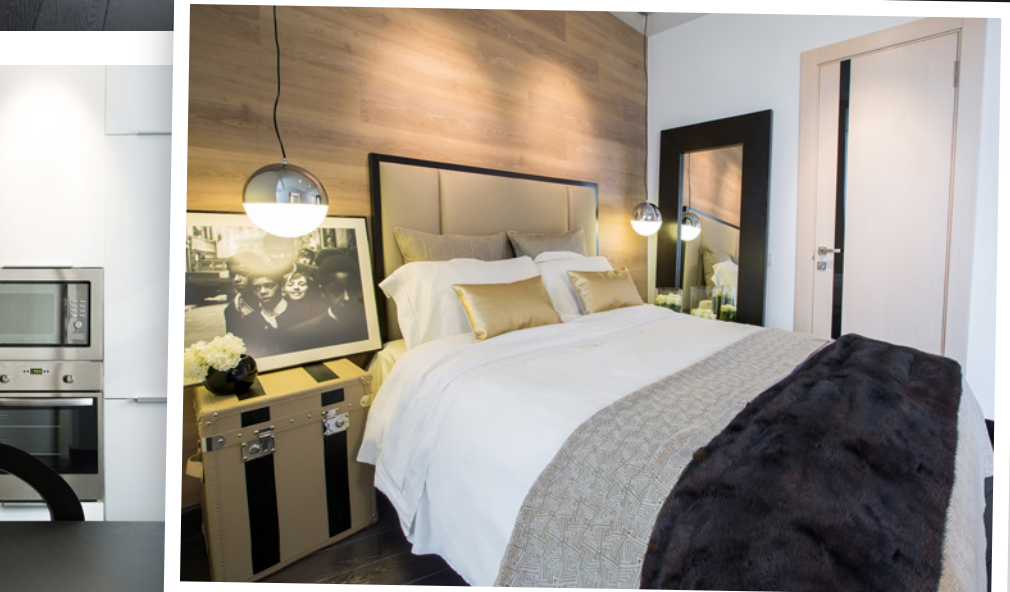
With a tiny space and a limited budget, adding a bedroom to an apartment in London was quite a challenge for professional interior designer Mila Podiablonska.



The brief for the 74 sq m apartment focused on retaining a feeling of space, so rearranging the internal walls to form the best layout was the initial priority. Adding a second bedroom and bathroom meant that creating an open-plan living, kitchen and dining area was a good way to utilise the remaining space. Clever divisions, where appropriate, allowed for the definition of different living areas to coexist with this feeling of openness.

"There was a structural supporting column in the centre of the apartment," explains Mila. "This proved to be very convenient when extending the wall, so that I could create a separate entrance corridor."





Custom-built sliding doors were also installed between the living area and bedroom, allowing the space to be opened up fully in the daytime.

The design scheme revolves around neutral but rich tones, illuminated by intelligent lighting with mirrors to create the illusion of more space.

The main feature in the living area is a biofuel fireplace with a recessed flat panel television above. "The biofuel fireplace is very practical and doesn't require gas or electricity mains connection, or a flue for ventilation, so they can be positioned almost anywhere," explains Mila. "In a small apartment, this kind of centrepiece is ideal because of its versatility."

LED lighting frames the feature, making the television appear as if it is floating. ➡



SHOPPING *List*

Main bedroom

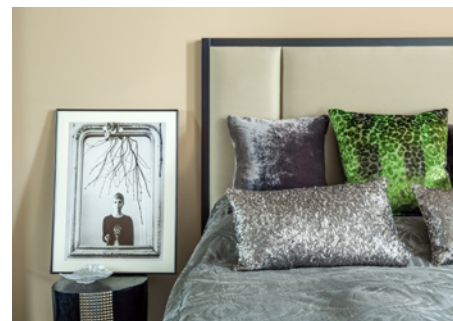
Pendant lighting SLV Lighting Direct, £149: slvlightingdirect.com
Savoy bed David Philips Furniture, £598: davidphilips.com
Golden cushions Zara Home, £20: zarahome.com
Trunks Kelly Hoppen: kellyhoppeninteriors.com
Dressing table and table lamp Ikea, £120 and £36: ikea.com
Fabric for white curtains Sahco Hesslain: sahco.com
Velvet upholstered chair La Fibule, £360: luxdeco.com

Living room

Austin console table La Fibule, £1,245: lafibule.fr
Metal sculpture Megaron: megaroncollection.com
Round black Karl coffee table La Fibule, £995: lafibule.fr
Half moon shape sofa La Fibule, £3,750: lafibule.fr
Black dining table Ikea, £99: ikea.com
Glossy white kitchen Ikea, £2,760: ikea.com

Second bedroom

Tree trunk side tables Kelly Hoppen: kellyhoppeninteriors.com
Green cushion The Designers Guild, £25: designersguild.com
Long silver cushions John Lewis, £55: johnlewis.com
Side TV unit Ikea, £125: ikea.com
Fabric for silver linen curtains Sahco: sahco.com





“No design is complete without at least one special item and I found some fabulous polished metal furniture and art from Turkey.”



“Lighting is very important to me and plays a crucial role in any design process,” says Mila. “I worked with SLV in Germany to find suitable soft lighting to highlight the beauty of the texture and colours of the walls, furniture and art.”

The kitchen blends seamlessly into the design, using bright white practical units to fit with the open-plan living area.

A small and discreet working area is designed to be almost invisible in the main bedroom, the white desk disappearing into the window, which is dressed with custom-made white curtains from Sahco fabric.

“The choice of fabric should never be overlooked in the design process,” says Mila. “Similarly the bed linen should provide an added touch of elegance.”

Clean lines and neutral tones work to open up the space, but not without a few important design features.

“No design is complete without at least one special item and I found some fabulous polished metal furniture and art from Megaron in Turkey,” explains Mila. “I used classic trunks from the Kelly Hoppen furniture collection for the bedside tables in the main bedroom and solid gloss painted tree trunks for the bedside tables in the guest bedroom.”

MINI BIOGRAPHY



Mila Podiablonska studied interior design and went on to gain her diploma in interior design with Kelly Hoppen. Mila's primary objective is that her clients love the look and feel of their surroundings, for which she continues to exceed their expectations.

Mila believes that good design starts and ends by incorporating clients' needs into a functional, comfortable environment. She encourages their participation throughout the whole design process.

FIND OUT MORE
absoluteinteriordecor.com